

# Software reprogramming on

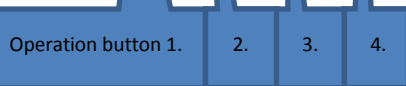
# Ensy AHU-units

**for version .037 on the motherboard and version .022 on the control panel.**



## Upgrading the software on ENSY AHU control panel

To see what software is on AHU unit you must enter the menu on the control panel by pressing the control button 3. You will be directed into the page 3. Information.



Scroll down to Program version and press enter button.



You can see that there is version .020 on Ensy Display and version .031 on Ensy Mater inside the unit. This is one of the previous software versions that the factory installed the units with.

If someone finds previous software version on control panel and on the master card then one should ask for an upgrade of software on these to the latest version. This will give the unit a safer operation and some improvements regarding reset of

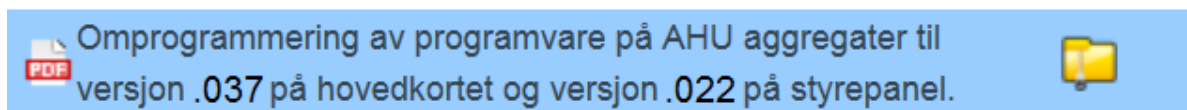
alarms.

If this program 022, 037 is installed, the unit sets all requirements in the passive housing standard. If one has two displays in the home, it is very important that both hosts are updated to version 022. Also make sure that one panel is Display 1 and the other Display 2.

- The software is located in the .Zip file on the same line where you found this document.

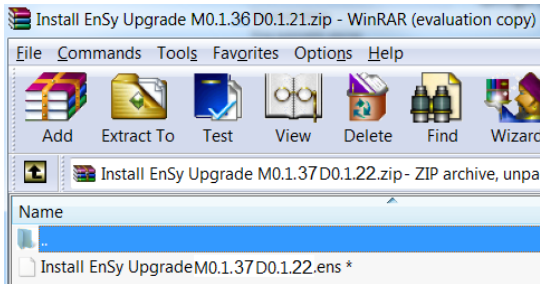
Dokumentnavn

.Zip



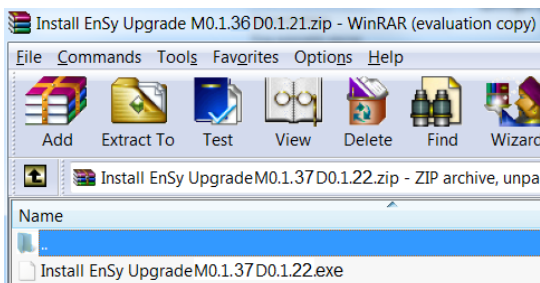
- The software can easily be installed on a laptop with USB outlets. One must also order a special reprogramming cable as between the USB connector on the PC and the RS485 port on the system board.
- If you can not do this yourself, you can order an upgrade through a service partner.

When you click the .Zip file you will get a dialog asking if you want to open or save. Select Open and you'll get such an image if you're using WinRAR.

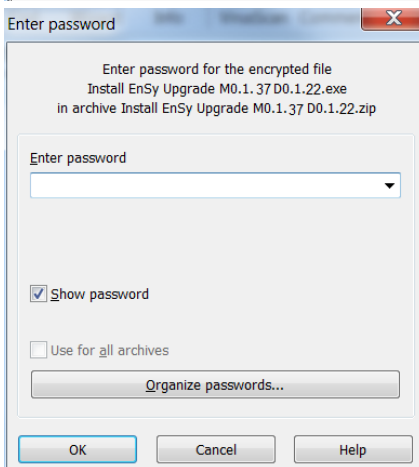


Change file format from .ens to .exe.

Change file format from "Install EnSy Upgrade M0.1.36 D0.1.21." To "Install EnSy Upgrade M0.1.36 D0.1.21.exe" by taking two slow left click with the mouse on the file name. Mark only .ens and wright .exe



The file looks like this.



Take a quick click on the left mouse button and you should get this picture up.



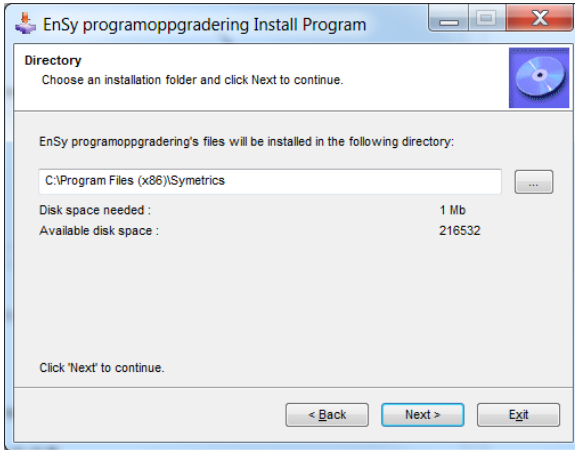
Enter password:

Use the password: **Ensyro**

Click **OK**

Then this picture comes up on the screen.

Click **Next**

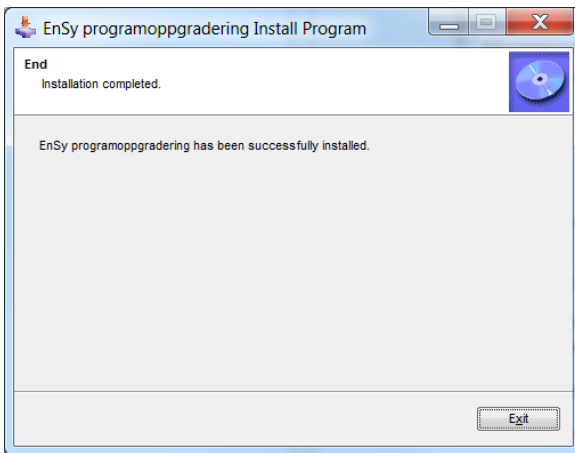


Then select where to save the program.

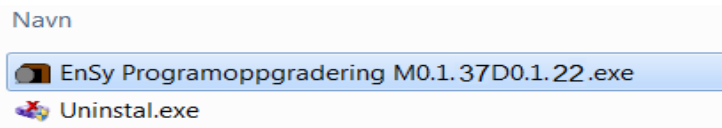
Either use the option that automatically comes up or select your location.

Once you have chosen the folder location.

Click **Next**



Click **Exit** and programming is complete. If you want to add a shortcut to your desktop, go into the folder where you saved the program.



Select the file marked here. Right-click on the file and select Send to Desktop (create shortcut)



The icon that then settles on the desk will look like this

### Start reprogramming:

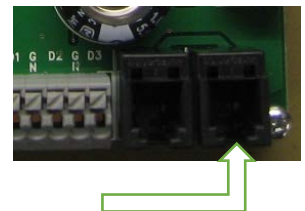



**The unit must be powered to be reprogrammed.**

*The display panel must be programmed via the master card. You cannot program display panel by connecting the programming cable directly to it.*

*You will find programming contacts inside the master card itself. In the top of the unit and or where the spiral cable for the panel in the hatch is plugged in.*


First, connect the USB cable between the PC and the device's RJ 11 port. (One is already busy on the control panel)

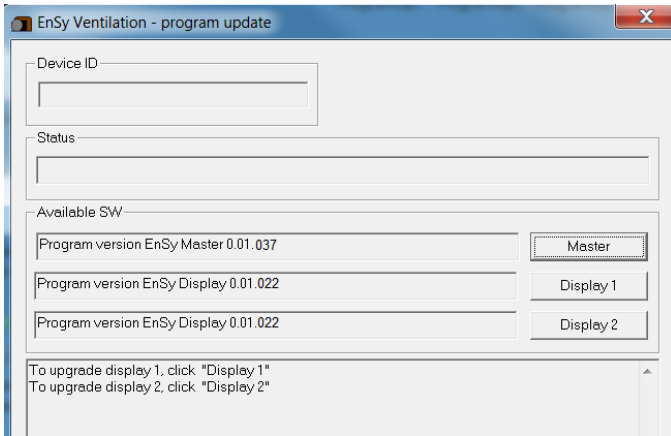


Then click  icon to start reprogramming.

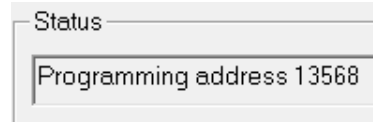
*(If you get a message that you need a dll file, you will be notified and you need to download it from the internet.)*

You should now see a page that looks like this.

Click the  button once to program the master card.



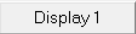
Under Status you will now see that the programming reads new data to the master card.



You get up **Upgrade successful!** in the field under Display 2.

You can now proceed to upgrade the control panel.

**If two displays are installed, check that one is called Display 1 and the other Display 2**

Click on  button.

Under Status, the programming will now read in new data to the control panel.

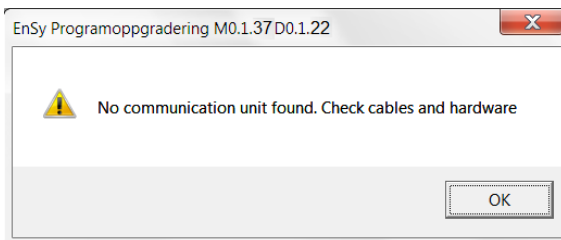
You get upgraded successful! in the field under Display 2.

**If 2 display are connected**

Click on  button.

Under Status, the programming will now read in new data to the control panel.

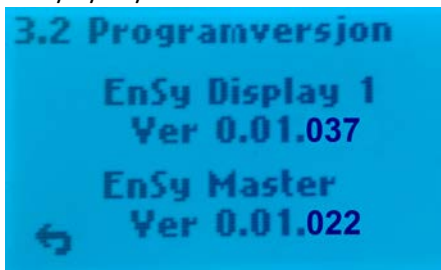
You get upgraded successful! in the field under Display 2..



(Once you get the message Upgrade successful! Just remove the RJ11 plug without worrying about the Master Card sending messages back.)

If you get this message box when you click on the "Master" or "Display" icon just try again.

Double check at the end on the control panel under Program version that you have received version .021/IT/GB/DE and .036





**Ensy AS**  
Mohagasvingen 1  
N-2770 JAREN  
<http://www.ensy.no>