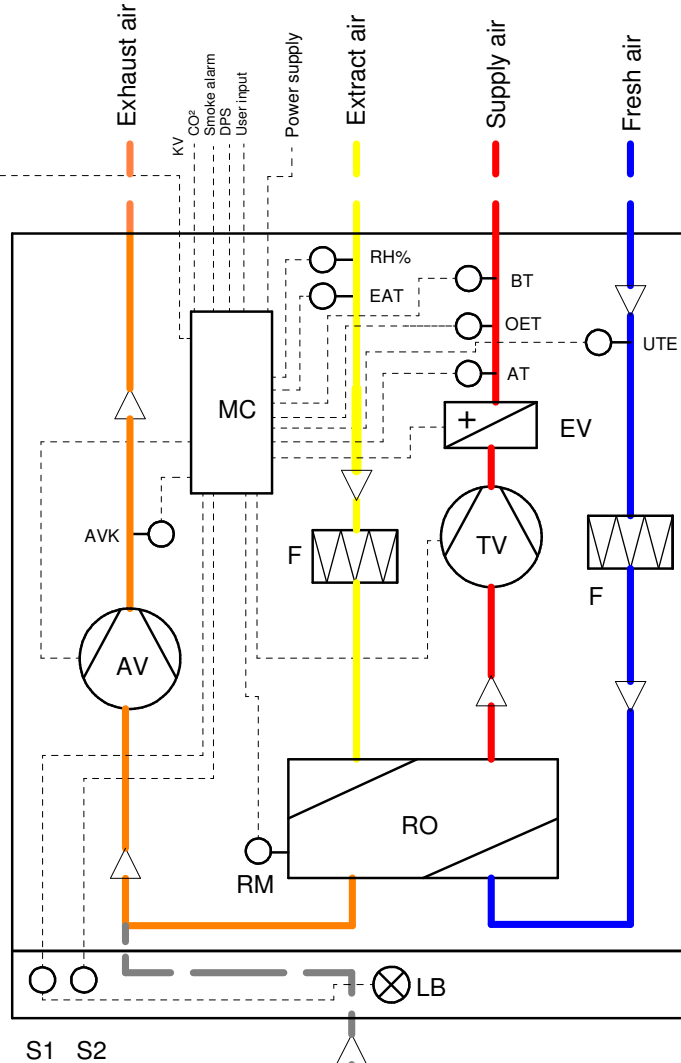
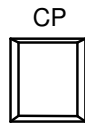


- AT** = Operation temperature sensor
- EAT** = Extract air sensor
- UTE** = Fresh air sensor/ Defrost sensor
- AVK** = Rotor guard sensor
  
- RH%** = Humidity sensor
  
- MC** = Control box
- CP** = Control panel
  
- TV** = Supply fan
- AV** = Extract fan
  
- EV** = Reheater battery
- BT** = Fire thermostat
- OET** = Overheat temperature sensor
  
- RM** = Rotor motor
- RO** = Rotary heat exchanger
- KV** = Cookerhood
- F** = Filter
  
- LB** = Light bulb in cookerhood
- S1** = Switch for lightbulb in cookerhood
- S2** = Timer switch for cookerhood
  
- CO<sup>2</sup> Sensor** - Optional
- Smoke alarm** - Optional
- DPS (Drop Pressure Sensor)** - Optional
- User Input** - Optional



Art no: 0200008-2  
 Art no: 0200010-2

		Material:		Art. no.: see above	
		Dim.:		Tolerance:	
Systemskjema Ensy					
InoVent AHU-200 KH					
Drawing number					Page
InoVent AHU-200 KH					1 · 1
Date	Name				
17.06.2020	A.Lucacean				
Drawn					
Checked					
Scale	1:1	A3			
Filename	Ensy InoVent AHU-200 KH.dwg				