

- AT** = Operation temperature sensor
- EAT** = Extract air sensor
- UTE** = Fresh air sensor/ Defrost sensor
- AVK** = Rotor guard sensor

- RH%** = Humidity sensor

- MC** = Control box
- CP** = Control panel

- TV** = Inlet fan
- AV** = Extract fan

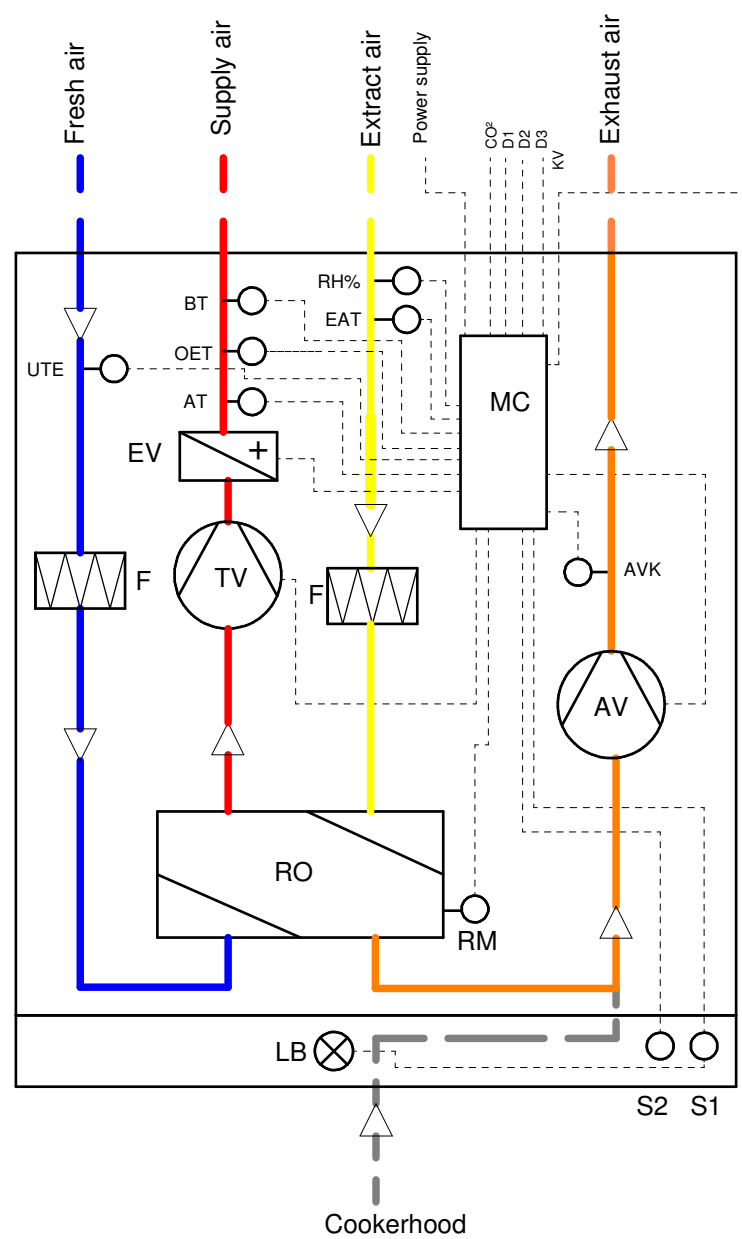
- EV** = Reheater battery
- BT** = Fire thermostat
- OET** = Overheat temperature sensor

- RM** = Rotor motor
- RO** = Rotary heat exchanger


- CO²** = CO² Sensor (Option)
- D¹** = Impulse switch (Option)
- D²** = External humidity sensor (Option)
- D³** = Home / Leave (Option)
- KV** = Cookerhood

- F** = Filter

- LB** = Light bulb in cookerhood
- S1** = Switch for lightbulb in cookerhood
- S2** = Timer switch for cookerhood



Art no: 0100005-2
 Art no: 0100007-2
 Art no: 0100009-2
 Art no: 0100011-2

		Material:	Art. no.: see above
		Dim.:	Tolerance:
Systemskjema Ensy AHU-200 KV			
Drawn	Date	Name	
Checked	21.12.2016	knkl	
Drawing number		Page	
Ensy AHU-200 KV		1 - 1	
Scale	1:1	A3	
Filename Ensy AHU-200 KV.idw			